



IES Grant #  
R324A160086

# Universal Strategy Redirection



Barton Lab  
bartonlabvu@gmail.com

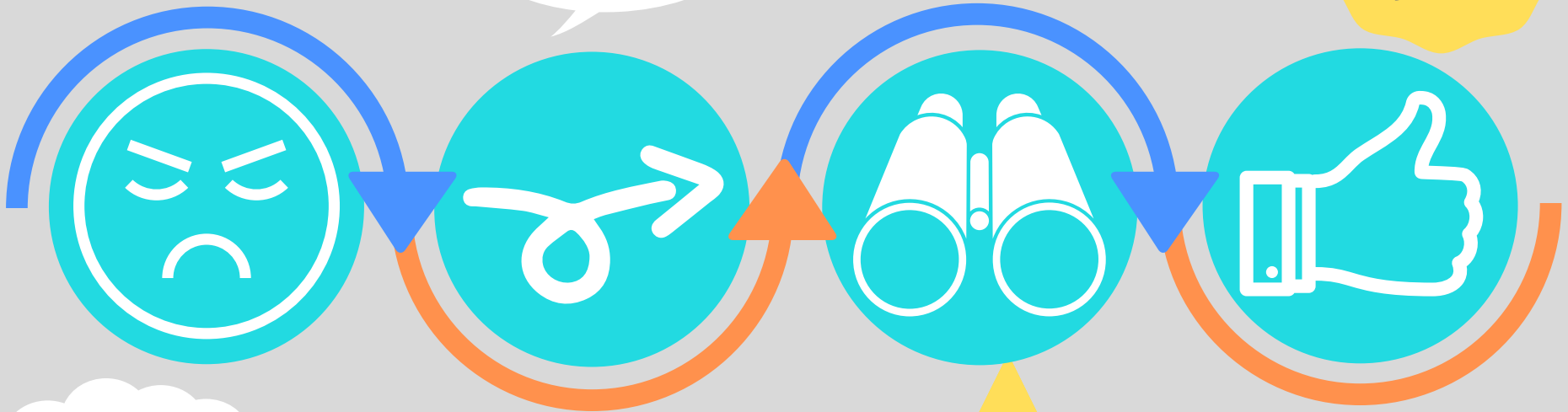
To prevent or stop challenging behavior, children can be redirected toward more appropriate behaviors.  
Redirection can increase positive behavior without increasing directives or corrective comments!

**Identify precursors to challenging behavior.** These are small signals that your child may escalate to bigger behaviors.

"The car ramp broke, but we can use the box to slide the cars like this!"

**Avoid giving too many directions. Instead, model new behaviors and reinforce appropriate behavior.**

**Provide lots of positive feedback when your child follows the expectations!**



"He is pouting and whining... it seems like he might throw a tantrum soon."

**Redirect by guiding the child to a more appropriate behavior. Show them something they CAN do - related to the current activity or totally new.**

**Redirect to a fun activity to give your child something else to do!**

**Tie the behavior back to the behavior expectations. "Thank you for having a calm body while we play!"**

**For more information on how to respond to challenging behavior, click here.**

