

Walk or Bike to School This Year!

ECASD is involved in the international Safe Routes to School program. Eau Claire Safe Routes To School is a program to create safer environments for students walking and biking to and from school.

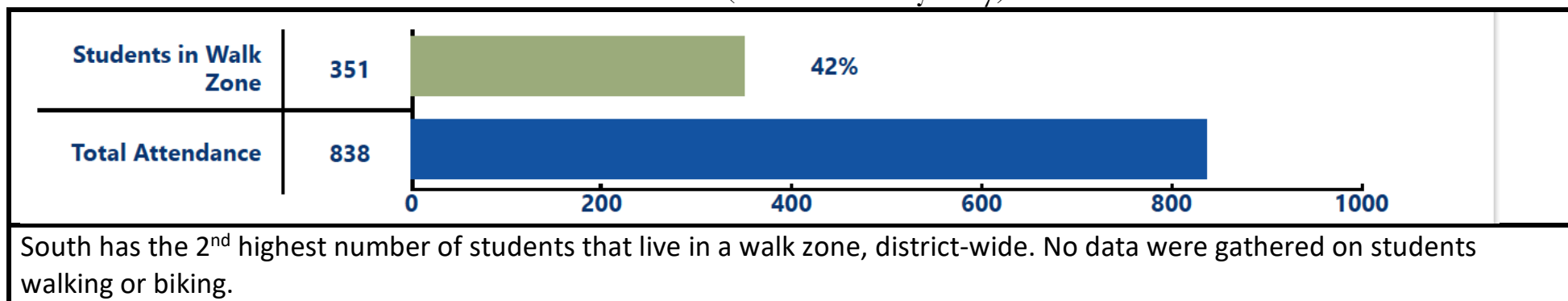
An active Safe Routes To School program helps Eau Claire create safer, easier, and more enjoyable walking and biking routes to school so more students choose walking and biking as their main mode of transportation.

Safe Routes to School program goals:

- Make it safer for kids to walk and bike to school.
- Encourage students to walk and bike to school.

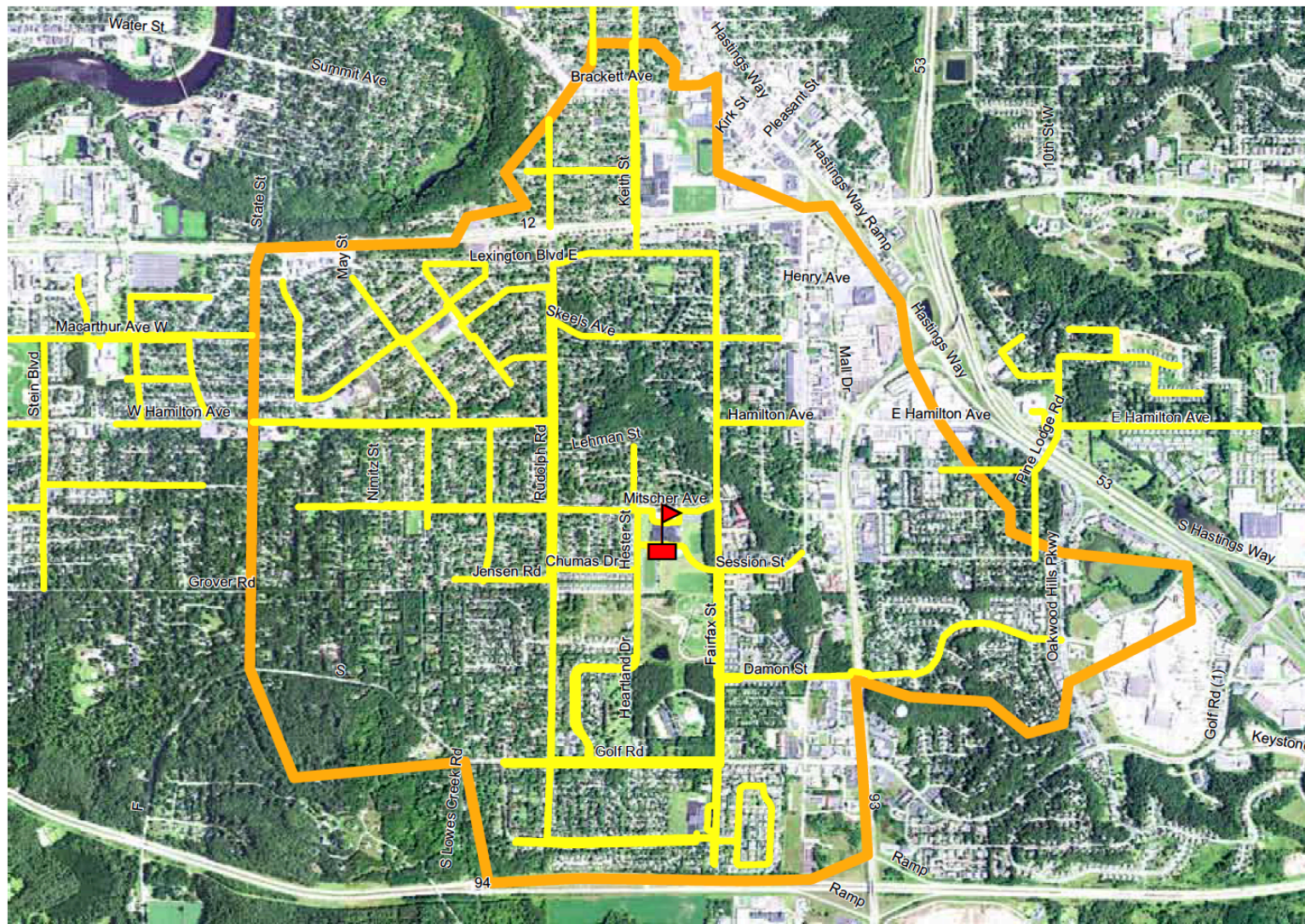


South Data (collected May 2017)



The map on the opposite side of this flyer shows your school's walk zone and safe routes. For specific questions about your school's crossing guards, walk zone, or safe routes, contact your building's Principal or Partnership Coordinator.

South Middle School



Legend



School



Crossing Guard



Walk Zone



Safe Route

December 2017

0 0.25 0.5 Miles

Data Sources:
2015 Aerial Image (USDA)
Eau Claire Area School District
WCWRPC



Walk zones are the designated areas where ECASD does not provide bus transportation. For elementary schools, this is within one mile of the school, and for middle and high schools, this is within two miles of the school. Areas within that distance that are beyond streets deemed to be hazardous are not in the walk zone and are eligible for bussing.

Additional information on Safe Routes to School for ECASD can be found by calling the ECASD Safety Coordinator at (715) 852-3025