

Who Can Help?

Each school in the Eau Claire Area School District has a contact who can assist with connecting families and students to the homeless program. The contact is often the school counselor, social worker, or an administrator.

New to Eau Claire?

Please contact the Enrollment Office at 715-852-3063 for information about area schools.

Please do not hesitate to call if you need assistance!



If you have any questions regarding any services received through the ECASD Homeless Program, contact the program coordinator at 715-852-3044.

The Eau Claire Area School District is an equal opportunity employer and does not discriminate on the basis of race, color, religion, national origin, political affiliation, sex, pregnancy, childbirth or related medical conditions, age, marital status, or disability in employment or in the provision of services, programs, or activities. Inquiries regarding non-discrimination should be directed to the Executive Director of Human Resources, Eau Claire Area School District, 500 Main Street, Eau Claire, Wisconsin 54701 (715) 852-3000.

Find us on Facebook!
ECASD Homeless Program

June 2016



500 Main Street
Eau Claire, WI 54701

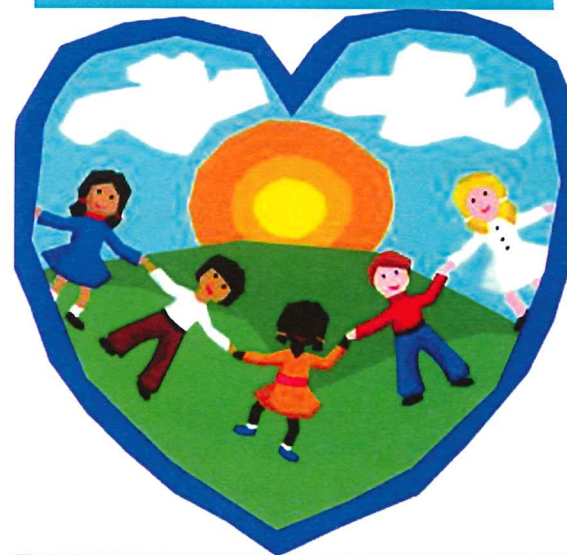
Phone: 715-852-3044

E-mail: dclaesges@ecasd.us



HOMELESS PROGRAM RESOURCE GUIDE

Education of Homeless
Children and Youth



Dani Claesges
Program Coordinator
Phone: 715-852-3044

Pete Riley
District Liaison
Phone: 715-852-6901

Community Resources

Housing

Interfaith Hospitality Network 715-834-4357

Beacon House Family Shelter

Western Dairyland Shelter 715-836-7511

Homeless Haven Family Shelters

Bolton Refuge House 715-834-0628

Family shelter, legal advocacy and supportive services
for victims of domestic violence and/or sexual assault

Food

The Community Table 715-835-4977

Free daily meals served onsite 320 Putnam St

St. Francis Food Pantry 715-839-7706

1221 Truax Blvd

Trinity Food Pantry 715-832-6601

1314 East Lexington Blvd

Clothing

A.R.K. 1929 3rd Street

Fridays 9am-4pm

Last Saturday of month 10am-2pm

The King's Closet 310 S Barstow Street

Thursdays 10am-5pm

First Saturday of month 9am-1pm

Shepherd's Closet 1120 Cedar Street

Second Wednesday of month 2-5:30pm

Medical Needs

Chippewa Valley Free Clinic 715-839-8477

Free medical care for uninsured 421 Graham Ave
Opens at 5pm on Tuesdays

Northwest Connections WI 888-552-6642

Mental health crisis intervention, 24 hours/day-7 days/wk



A student may be considered homeless if he or she is not in stable or adequate housing and is presently living:

- ♦ At another person's residence due to loss of housing, economic hardship or related circumstance.
- ♦ In an emergency or transitional shelter
- ♦ In a motel, hotel, seasonal trailer park, or campground
- ♦ Separate from legal parents or guardians
- ♦ In a car, park, public space, abandoned building, substandard housing, bus or train station, or similar setting

All students identified as living in a homeless situation have the right to:

- ♦ Immediate enrollment in school, even when records are not present at time of enrollment
- ♦ Continue attending the school of origin (school attended when student became homeless)
- ♦ Receive transportation assistance to the school of origin (if student is living outside of school's boundaries)
- ♦ Support for academic success
- ♦ Free school meals

For more information on the rights of students in homeless situations, please contact the program coordinator.

Find more information about the Education of Homeless Children and Youth at:
<http://dpi.wi.gov/homeless/faq#resp>