



# SOUTH MIDDLE SCHOOL NEWSLETTER

## Falcon Calendar

March 21- End Quarter 3 sports

March 21- Variety Show 7:00 pm

March 22- End Quarter 3

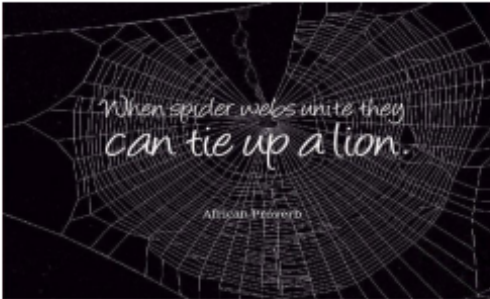
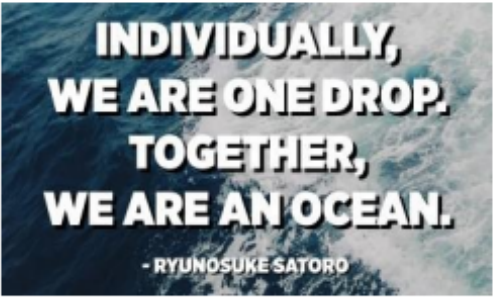
March 25-29 Spring Break-Schools Closed

TODAY is your DAY!

SMS Falcon Character Theme

BE THE good

~March~

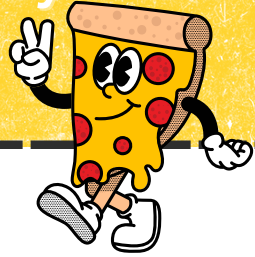


U ↔ N ↔ I ↔ T ↔ Y

Appreciate your own values; Understand the values of others; Treat others as individuals; Take time to actively listen; Embrace others' differences

# ANNOUNCEMENTS

Thanks to Topper's Pizza, SFAC, and families for the wonderful conference meal. We appreciate your generosity.



## ECASD Family Climate Survey

We care about your opinion! On March 4, families will receive an email invitation from Superintendent Mike Johnson to complete the ECASD Family Climate Survey. The information we learn from you will help us to know what we're doing well and where we need to improve. Families will have until Sunday, March 17 to complete this survey. Please keep an eye out for this email message in the coming weeks.

¡Nos importa tu opinión! El 4 de marzo, las familias recibirán una invitación por correo electrónico del Superintendente Mike Johnson para completar la Encuesta de Clima Familiar de ECASD. La información que aprendamos de ti nos ayudará a saber qué estamos haciendo bien y como debemos mejorar. Las familias tendrán hasta el domingo 17 de marzo para completar esta encuesta. Por favor, esté pendiente a este mensaje de correo electrónico en las próximas semanas.

Contact Jen Whatley (jwhatley@ecasd.us or 715-852-5207) if you want food from our food pantry or weekend meals.



# ANNOUNCEMENTS

## SOUTH APPAREL

Order your apparel by Friday, March 8th  
<https://cusports.chippily.com/southmsspring/>



**SOUTH**  
MIDDLE SCHOOL

Royal Credit Union is open at South Middle School on **Wednesdays** before school to help students learn how to manage their money and create the habit of saving each week for life. Students receive a different giveaway item, such as stress balls, chips, or cookies each time they save at least \$0.50 at school. Encourage your student to be responsible with their money by saving each week!

In January, every time a student saves at least \$0.50, their name will be entered into a drawing for a \$25 Amazon gift card. Increase your chances of winning by saving every Friday!

If you want to know how to start saving at South with Royal Credit Union, please contact Rachel Orlousky at: [rachel.orldousky@rcu.org](mailto:rachel.orldousky@rcu.org).





# FORWARD TESTING

## SNACKS

Use the link below to sign up to donate snacks during forward testing. We appreciate your support!



<https://www.signupgenius.com/go/70A0C4EACA72FA5F58-48107147-forward>



Recently, our school had the privilege of hosting two exceptional speakers. Terrance Talley engaged with our seventh graders, while Jesse Horn addressed our sixth graders. Each speaker delivered impactful messages that resonated with our students.

The SAFE club advocated for healthy Mental Health at Memorial for Terrence Tally's community presentation. The students made a poster about mental health and handed out suicide hotlines, crisis intervention phone lines, ways to prevent depression, and ideas to keep mental health issues from occurring.

**JOIN THE SENSE SPECIAL EDUCATION PTO-ECASD FOR THEIR RESOURCE FAIR ON TUESDAY, MARCH 12, FROM 4:00-6:30 PM AT THE LE PHILLIPS PUBLIC LIBRARY.**

.....●SENSE- ECASD SPECIAL EDUCATION PTO.....

# RESOURCE FAIR

**4:00-6:30 PM**

**March 12th**

**2024**

**L.E. Phillips Public Library  
Riverview Room 306**


400 Eau Claire St. Eau Claire, WI 54701

**Who is this for?** All are welcome! If you support a child or young adult with learning differences or special needs and would like to learn more about the resources we have in our community, this is for you!

**What Resources will be there?**

- ECASD Transition services
- CRI (Chippewa River Industries)
- Children's Resource Center West
- Variety, the Children's Charity of WI
- Aurora Vocational Services
- UWEC-Services for Students with Disabilities
- Down Syndrome Association of WI
- And more!

Questions? [septoecwi@gmail.com](mailto:septoecwi@gmail.com)

  
ECASD Special Education PTO  
**S.E.N.S.E.**  
Supporting Education. Nurturing Strength. and Empowerment.

## **2024-2025 School Year Calendar Approved by School Board**

Our School Board approved the 2024-2025 School Year Calendar at the January 22, 2024, School Board meeting. Please go to [2024-2025 School Year Calendar \(pdf\)](#) for details.

# Fitness Gram

The Eau Claire Area School District has revised its Physical Education program in grades 6-12. Included in this revision is an increase in fitness instruction and the addition of fitness assessments. The instruction and assessments will include FITNESSGRAM. FITNESSGRAM is a health-related fitness assessment developed by The Cooper Institute and is a research-based criterion referenced test.

The Eau Claire Area School District considers FITNESSGRAM a quality assessment for three reasons:

1. FITNESSGRAM establishes a baseline of a healthy fitness zone from which students can set goals and check their progress (non-competitive) to plan for lifelong physical activity and to maintain and improve their fitness level. This health-related fitness assessment measures students' aerobic capacity, muscular strength/endurance, flexibility and body composition.
2. FITNESSGRAM provides recommended activity program options that will help students reach healthy fitness zones in those areas where they need to improve.
3. FITNESSGRAM does not place an emphasis on skill or sports-related fitness such as speed measured by an individual's 40 yard dash time. It does not compare students to other students. All student data will be confidential.

FITNESSGRAM tests all students regardless of age, gender, or ability. Students are encouraged to be self-aware of health-related fitness and take responsibility by setting personal fitness goals. When students focus on the process of doing their personal best, a more positive lifelong impact is achieved.

There are several FITNESSGRAM assessment components, so students should expect the assessment process to take more than one class period. FITNESSGRAM assessment components include running, flexibility, curl-ups, push-ups, trunk lift. Height and weight are also included as a part of the assessment, and these measurements are taken privately. If you would like your student to be excluded from any of the FITNESSGRAM measurements, please contact your student's physical education teacher.

Each year students will be assessed in the first weeks of their physical education course, and again during the last weeks. This will allow students and their parents/guardians to measure their fitness progress over the school year and year-to-year.

FITNESSGRAM assessment reports will be emailed to all students, and also emailed to parents who have given at least one email address to their school through the Student Information Card, which is updated at the start of each school year. Parents/guardians without an email address will be given a paper copy of their child's report, which will be brought home by the child.

The Eau Claire Area School District believes by providing you and your child with this health-related fitness information you can lead your child toward a healthy lifestyle. A healthy student is better prepared to learn and perform in all aspects of life. A sample student report may be found at <http://www.fitnessgram.net/files/fgsamplereports.pdf>.

If you have any questions about the FITNESSGRAM Assessment, please contact your student's physical education teacher. You may also learn more about FITNESSGRAM at <http://www.fitnessgram.net/>.



# Student Services



We're celebrating National School Social Worker Week and the tremendous impact social workers have on the lives of our students and families! School social workers are trained mental health professionals who provide services related to individuals' social, emotional, and life adjustment to school and society. Consider taking time this week to thank a school social worker for their dedication to the health and wellbeing of our students!



# IMPORTANT LINKS

[March Lunch Menu](#)

[ECASD Family Service Webpage](#)

[South Middle School Website](#)

[My School Bucks](#)

Check balance and deposit money into  
your child's lunch account

[ECASD School Calendar](#)

[Community Events](#)

[Family Tech Support Information](#)

[Skyward Family Access](#)

