



Dear Parent,

As part of HMH's commitment to teachers and students nationwide, we are offering free use of *Waggle's* digital, personalized learning solution for grades 3-8. As an online program, *Waggle* offers the ability for students to engage in adaptive ELA and Math foundational skills practice from the comfort and safety of their homes. Despite school closures, students will benefit from features like embedded hints and encouragement that foster a growth mindset –especially important when students and teachers are unable to meet in person.

To learn more about *Waggle*, please go to <https://www.hmhco.com/programs/waggle>

How do I get my child started?

1. Ensure you have an adequate learning space with good internet connectivity.
2. Ensure you have your child's district username (your child's district email which is their student ID#@ecasd.us) and password (the student's lunch pin #).
3. Your child will access Waggle by logging in through Clever on the ECASD website.
 - On the right side of the ECASD website, click on the link for Student Technology Resources.
 - Choose Clever and look for the Waggle button toward the bottom of the screen.
4. Have your child watch the 4-minute [Student Walkthrough Video](#) demonstrating how to use Waggle.
5. Once content is assigned by your district/school, your student is ready to begin Wagglings!

How can I support my child's progress in Waggle?

Success in *Waggle* has a lot to do with how students approach the program. *Waggle* is designed to “meet the student where they are” when presenting appropriately leveled questions to your child. To have the most engaging and effective experience, remind your child of these *Waggle* best practices:

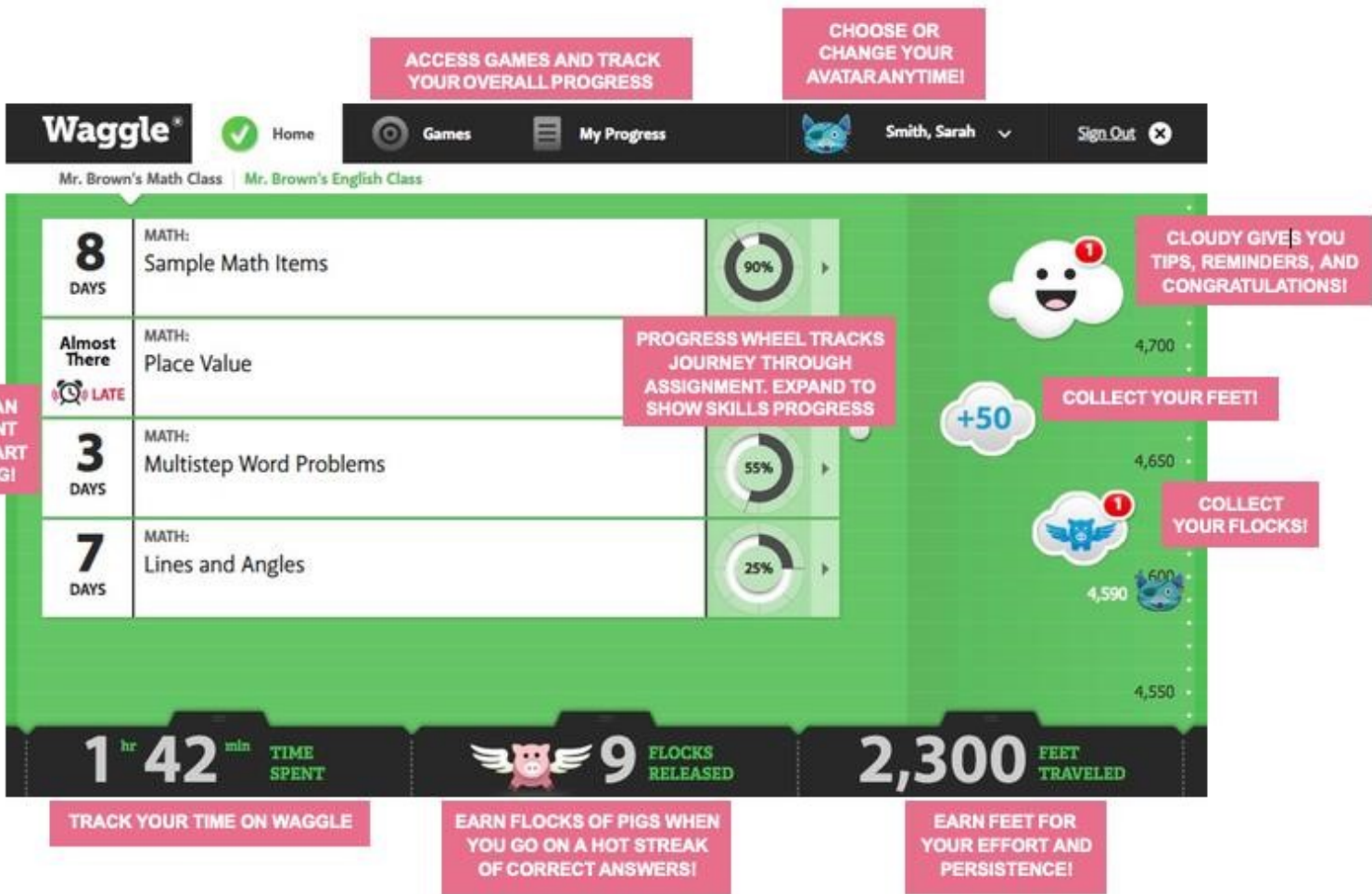
- Slow Down and take your time
- Read everything on the page, closely and carefully BEFORE checking your answer
- Use your hints! They never count against you!

It is okay if your child gets a question wrong because *Waggle* will analyze why and how they got it

wrong and provide the next practice item to address your child’s learning needs. If you have any questions about *Waggle*, please contact your child’s classroom teacher.

The Student Dashboard

The Student Dashboard is your child’s *Waggle* homepage. Here they can see view their assignments, progress, and collect and keep track of all their earned badges. Below you’ll find some more information on other elements of the Student Dashboard.



Play Games

In addition to assignments, you may be able to practice your Math and [ELA](#) skills using the Waggle Games feature. Your Teacher can allow you access to 1-5 game plays up six times each week, unlimited game play each week, or restrict your play to 0 games accessible from the Games tab. When you access the

Game tab, the number of games you can play for each game appears on the game card. A card appears for each game you can play. Use the navigation

buttons to scroll through the games.