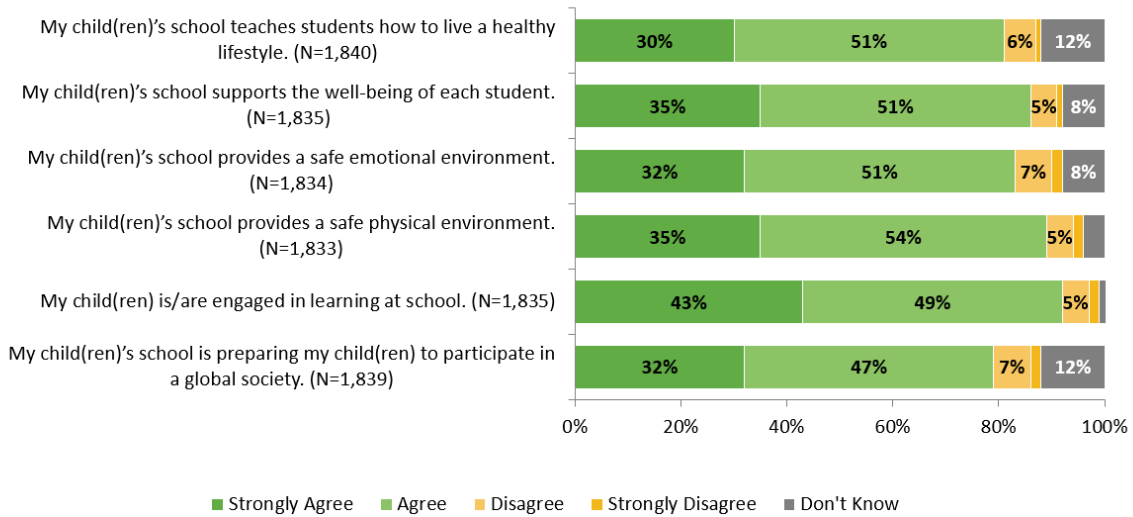


# Educating the Whole Child

## Family Climate Survey 2018

### Educating the Whole Child

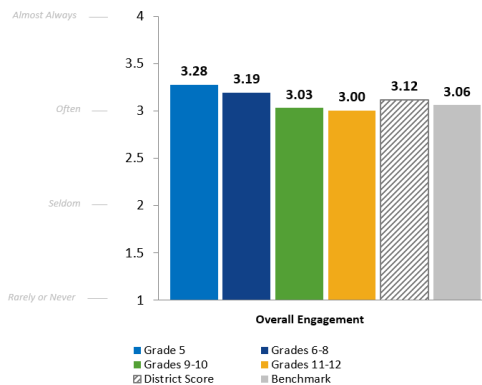
How strongly do you agree or disagree with the following statements?



# Overall Student Engagement

## Student Engagement Survey 2018

### Overall Engagement



Higher Scores Reflect Stronger Engagement: All engagement questions use a 4-point frequency scale:

Never (1), Sometimes (2), Often (3), Always (4).

## Areas of Strength and Concern

---

### *Social & Emotional Engagement*

Responding Group	Weakest Engagement Score	Strongest Engagement Score
Grade 5	<b>Involvement:</b> I participate in extracurricular activities.	<b>Involvement:</b> I try my best in class.
Grades 6-8	<b>Relationship Management:</b> I participate in extracurricular activities.	<b>Future Aspirations:</b> I plan to continue my education after high school.
Grades 9-10	<b>Involvement:</b> I participate in extracurricular activities.	<b>Self-Management:</b> I am nice to my teacher(s).*
Grades 11-12	<b>Involvement:</b> I participate in extracurricular activities.	<b>Self-Management:</b> I am nice to my teacher(s).*

*\*These items were in the same position last year.*

Potential strategies to increase engagement scores:

- Learn student interests to expand extracurricular activities.
- Identify the barriers to participation in extracurricular activities and find ways to overcome them.